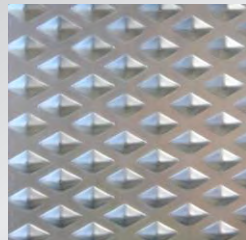


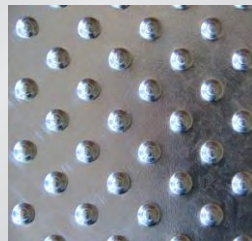
## Public sector



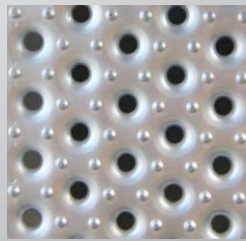
**Graepel-Perl**  
(formerly: Cone)



**Graepel-Rhombus**  
(formerly: Diamond)



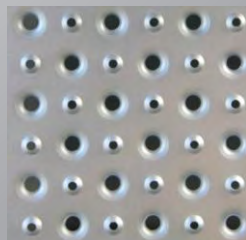
**Graepel-Spikes**  
(new perforation)



**Graepel-Garden**  
(formerly: Round No8)

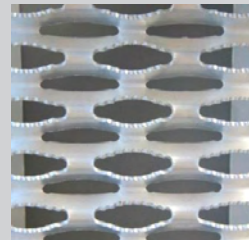


**Graepel-Indoor**  
(formerly: Round A)

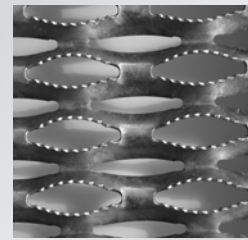


**Graepel-City**  
(formerly: Round B)

## Industrial sector



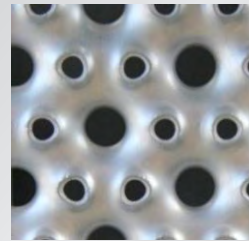
**Graepel-Stabil**



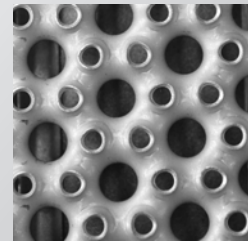
**Graepel-Stabil Xtrem**  
(formerly: Stabil S)



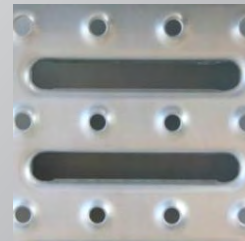
**Graepel-Light Profile**



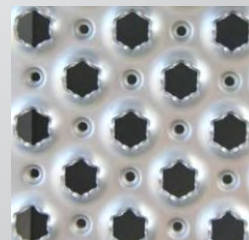
**Graepel-Universal**  
(formerly: Round S)



**Graepel-Metric**  
(formerly: Round S  
30 parts)



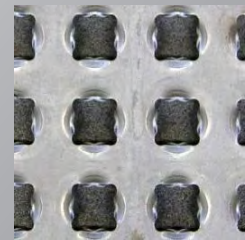
**Graepel-Steg**



**Graepel-Star**  
(formerly: Round Z)



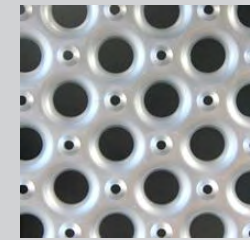
**Graepel-Open**  
(formerly: Round U)



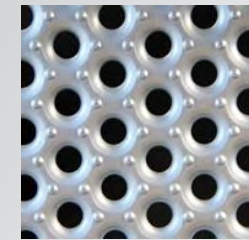
**Graepel-Quattro**  
(formerly: CAT Star)

## Special perforations

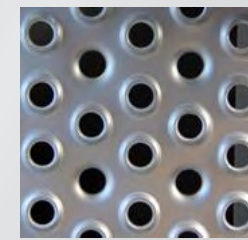
### A) Special perforations (selection)



**Graepel-Special 4-14**  
(formerly: Round F)



**Graepel-Special P-12**  
(formerly: Round N12)



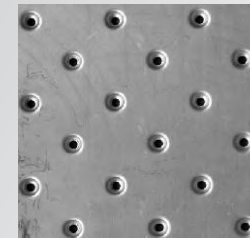
**Graepel-Special 12-12**  
(formerly: Round)



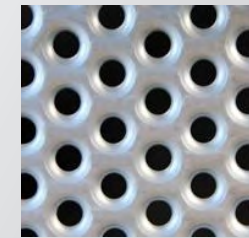
**Graepel-Special 8-8**  
(formerly: Round K)

**Naming rule: Graepel-Special hole diameter upward - hole diameter downward**  
(P stands for Perl, rubber stud becomes Graepel-Rubber-Stud)

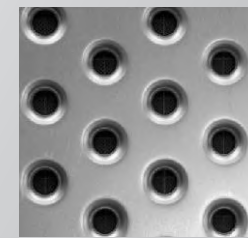
### B) Special perforations without slip resistance (selection)



**Graepel-Glide 4**  
(formerly: Round A  
folded inversly)



**Graepel-Glide 12**  
(formerly: Round 12  
without cones)



**Graepel-Glide 15**  
(formerly: Rubber Stud  
without plugs)



**Graepel-Glide 18**  
(formerly: Round C)

**Naming rule: Graepel-Glide hole diameter downward**

### NOTES:

Special perforations are only for customers with special requirements. The names are standardized, but they do not serve for choosing the perforations.

Special perforations demonstrate our competence and the diversity of the perforations offered by Graepel.

We are open to customer wishes.

\*Features like program perforation, edge perforation etc. are not shown as separate perforations but as options.

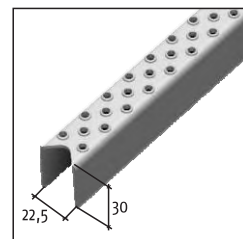
## Dear Colleagues,

we will rename a part of our perforations: With the speaking names, it should be easier for customers to select the appropriate perforation for their intended purpose.

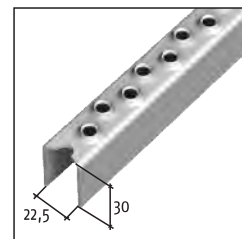
**The introduction date will be determined in the course of the project.**

We have distinguished perforations for 3 fields of application: for the public sector, the industrial sector and special perforations.

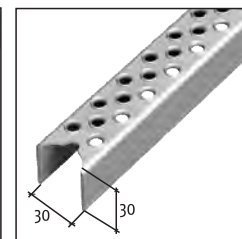
## LADDER RUNGS | Rule: Graepel-width-perforation



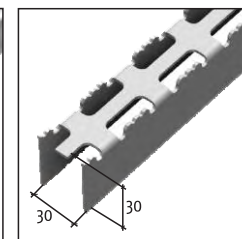
**Graepel-22-Round4**  
(formerly: LO/4)



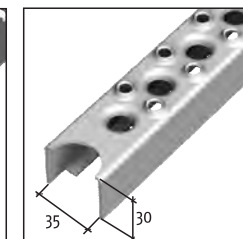
**Graepel-22-Round8**  
(formerly: LO/8)



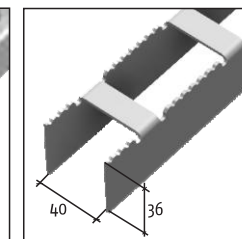
**Graepel-30-Round6**  
(formerly: LO/6)



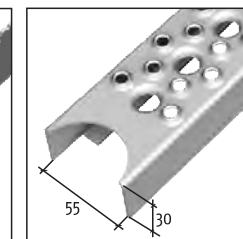
**Graepel-30-Grip**  
(formerly: LO/Grip)



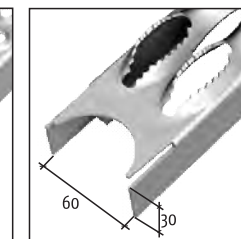
**Graepel-35-Metric**  
(formerly: LO/30)



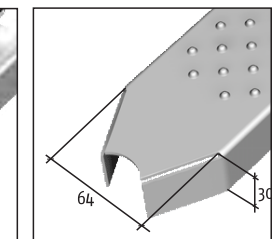
**Graepel-40-Light profile**  
(formerly: LO/Steg)



**Graepel-55-Metric**  
(formerly: LO/RS)



**Graepel-60-Stabil**  
(formerly: LO/GS)



**Graepel-64-Perl**  
(formerly: LO/K)

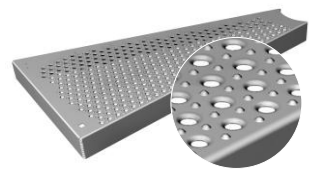
\*Graepel-30-Round6 ist also available with unperforated ends and return flanges.



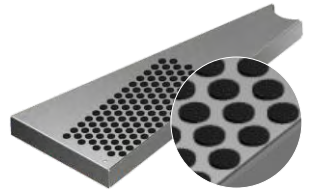
# SPIRAL STAIRWAY STEPS

without riser tube

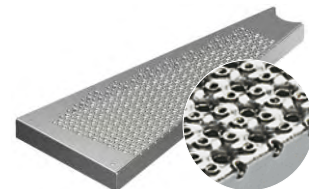
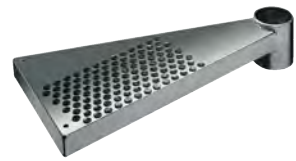
with welded-on riser tube



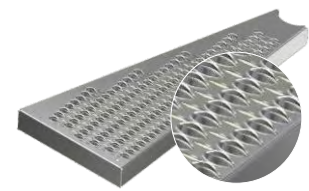
**Graepel-Garden**  
(formerly: Graepel-Round N08)



**Graepel-Rubber-Stud**



**Graepel-Universal**  
(formerly: Graepel-Round S)



**Graepel-Stabil**



# TRANSLATION TABLE



No.	Former name GB/US	New name D	New name GB/US	New name F	New name PL	New name SK	New name NL	New name RUS
1	Round B	Graepel-City	Graepel-City	Graepel-City	Graepel-City	Graepel-City	Graepel-City	Graepel-City
2	Round N08	Graepel-Garden	Graepel-Garden	Graepel-Garden	Graepel-Garden	Graepel-Garden	Graepel-Garden	Graepel-Garden
3	Round A	Graepel-Indoor	Graepel-Indoor	Graepel-Indoor	Graepel-Indoor	Graepel-Indoor	Graepel-Indoor	Graepel-Indoor
4	Cone	Graepel-Perl	Graepel-Perl	Graepel-Perl	Graepel-Perl	Graepel-Perl	Graepel-Perl	Graepel-Perl
5	Diamond	Graepel-Raute	Graepel-Rhombus	Graepel-Losange	Graepel-Raute	Graepel-Raute	Graepel-Ruit	Graepel-Raute
6		Graepel-Spikes	Graepel-Spikes	Graepel-Spikes	Graepel-Spikes	Graepel-Spikes	Graepel-Spikes	Graepel-Spikes
7	Round S	Graepel-Universal	Graepel-Universal	Graepel-Universal	Graepel-Universal	Graepel-Universal	Graepel-Universal	Graepel-Universal
8	Round U	Graepel-Open	Graepel-Open	Graepel-Open	Graepel-Open	Graepel-Open	Graepel-Open	Graepel-Open
9	Round Z	Graepel-Star	Graepel-Star	Graepel-Star	Graepel-Star	Graepel-Star	Graepel-Star	Graepel-Star
10	Stabil	Graepel-Stabil	Graepel-Stabil	Graepel-Stabil	Graepel-Stabil	Graepel-Stabil	Graepel-Stabil	Graepel-Stabil
11	Stabil S	Graepel-Stabil Xtrem	Graepel-Stabil Xtrem	Graepel-Stabil Xtrem	Graepel-Stabil Xtrem	Graepel-Stabil Xtrem	Graepel-Stabil Xtrem	Graepel-Stabil Xtrem
12	Steg	Graepel-Steg	Graepel-Steg	Graepel-Steg	Graepel-Steg	Graepel-Steg	Graepel-Steg	Graepel-Steg
13	Light Profile	Graepel-Lichtprofil	Graepel-Lichtprofile	Graepel-Profilé Lumineux	Graepel-Lichtprofil	Graepel-Lichtprofil	Graepel-Lichtprofil	Graepel-Lichtprofil
14	Round S30	Graepel-Metric	Graepel-Metric	Graepel-Metric	Graepel-Metric	Graepel-Metric	Graepel-Metric	Graepel-Metric
15	CAT Star	Graepel-Quattro	Graepel-Quattro	Graepel-Quattro	Graepel-Quattro	Graepel-Quattro	Graepel-Quattro	Graepel-Quattro
16	Round	Graepel-Special 12-12	Graepel Special 12-12	Graepel-Special 12-12	Graepel-Special 12-12	Graepel-Special 12-12	Graepel-Special 12-12	Graepel-Special 12-12
17	Round-F	Graepel-Special 4-14	Graepel-Special 4-14	Graepel-Special 4-14	Graepel-Special 4-14	Graepel-Special 4-14	Graepel-Special 4-14	Graepel-Special 4-14
18	Round-K	Graepel-Special 8-8	Graepel-Special 8-8	Graepel-Special 8-8	Graepel-Special 8-8	Graepel-Special 8-8	Graepel-Special 8-8	Graepel-Special 8-8
19	Round N12	Graepel-Special P 12	Graepel-Special P 12	Graepel-Special P 12	Graepel-Special P 12	Graepel-Special P 12	Graepel-Special P 12	Graepel-Special P 12
20	Round-C foldes inversely	Graepel-Special 18-0	Graepel-Special 18-0	Graepel-Special 18-0	Graepel-Special 18-0	Graepel-Special 18-0	Graepel-Special 18-0	Graepel-Special 18-0
21	Rubber Stud without plugs folded inversely	Graepel-Special 15-0	Graepel-Special 15-0	Graepel-Special 15-0	Graepel-Special 15-0	Graepel-Special 15-0	Graepel-Special 15-0	Graepel-Special 15-0
22	Round-C	Graepel-Glide 18	Graepel-Glide 18	Graepel-Glide 18	Graepel-Glide 18	Graepel-Glide 18	Graepel-Glide 18	Graepel-Glide 18
23	Rubber Stud without plugs	Graepel-Glide 15	Graepel-Glide 15	Graepel-Glide 15	Graepel-Glide 15	Graepel-Glide 15	Graepel-Glide 15	Graepel-Glide 15
24	Round N12 without cones	Graepel-Glide 12	Graepel-Glide 12	Graepel-Glide 12	Graepel-Glide 12	Graepel-Glide 12	Graepel-Glide 12	Graepel-Glide 12
25	Round-A	Graepel-Glide 4	Graepel-Glide 4	Graepel-Glide 4	Graepel-Glide 4	Graepel-Glide 4	Graepel-Glide 4	Graepel-Glide 4
26	Quadrat	Graepel-Reflex	Graepel-Reflex	Graepel-Reflex	Graepel-Reflex	Graepel-Reflex	Graepel-Reflex	Graepel-Reflex
27	Rubber Stud	Graepel-Gumminoppe	Graepel-Rubber-Stud	Graepel-Bouchons en caoutchouc	Graepel-Gumminoppe	Graepel-Gumminoppe	Graepel-Rubbernop	Graepel-Gumminoppe
28	Cone S		Graepel Cone-S (only for CAT and John Deere)					
29	etc.							

# STEPS FOR STRAIGHT STAIRWAYS

NOTE: ALL STEPS ARE PROGRAM CONTROLLABLE.

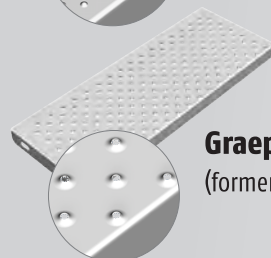
## Public sector



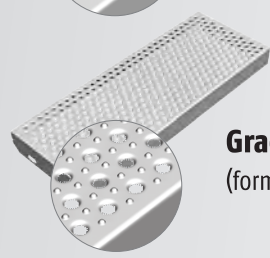
**Graepel-Perl**  
(formerly: Graepel-Cone)



**Graepel-City**  
(formerly: Graepel-Round B)



**Graepel-Indoor**  
(formerly: Graepel-Round A)

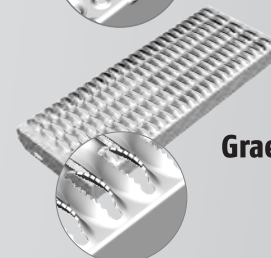


**Graepel-Garden**  
(formerly: Graepel-Round N08)

## Industrial sector

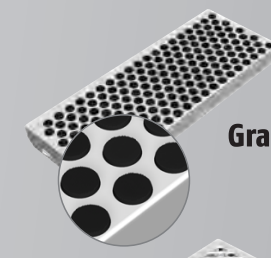


**Graepel-Universal**  
(formerly: Graepel-Round S)

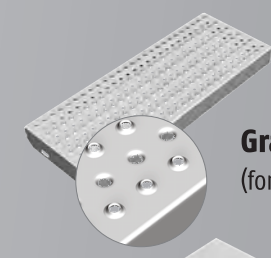


**Graepel-Stabil**

## Special perforations



**Graepel-Rubber-Stud**



**Graepel-Special 8-8**  
(formerly: Graepel-Round K)



**Graepel-Special 4-14**  
(formerly: Graepel-Round F)



**Graepel-Special P 6**  
(formerly: Graepel-Cone with perforated stepping edge)