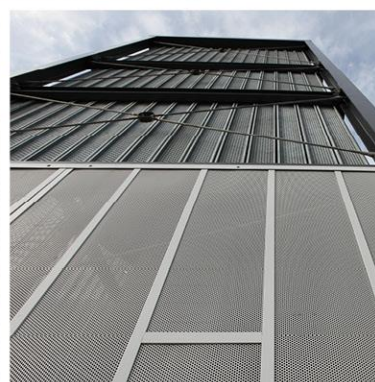


Graepels Railway Album

January 2017

**Your Choice for
Perforated Metal
& Woven Mesh**



CORK

Graepel Perforators & Weavers Ltd.
Barrack Green, Kinsale
Co. Cork, Ireland
Eircode: P17 FE80
Tel.: +353 (0) 21 477 2105
Email: sales@graepels.com

DUBLIN

Graepel Perforators & Weavers Ltd.
Unit 6, Ballymount Road Ind. Est.,
Walkinstown, Dublin 12.
Eircode: D12 HD37
Tel.: +353 (0) 1 450 9955
Email: sales@graepels.com

WARRINGTON UK

Graepel Perforators Ltd.
Unit 5, Burtonwood Ind. Centre.,
Phipps Lane, Burtonwood,
Warrington, WA5 4HX
Tel.: +44 (0) 1925 229 809
Email: sales@graepels.com

BELFAST

Graepel Perforators Ltd.
7 Grangewood Hill,
Dundonald, Belfast,
Co. Antrim, BT16 1GQ
Tel.: +44 (0)28 9048 4800
Email: sales@graepels.com

Welcome to Graepels

Your Choice for Perforated Metal & Woven Mesh

Bespoke metal products since 1959

Graepel Perforators have been supplying quality Perforated and Woven Metal Products to Irish and UK customers since 1959.

We take pride in manufacturing precision products on time for our customers. We have been supplying the Architectural and Building Industry for over 50 years. During this time we have had the opportunity to work on some exciting and interesting projects.

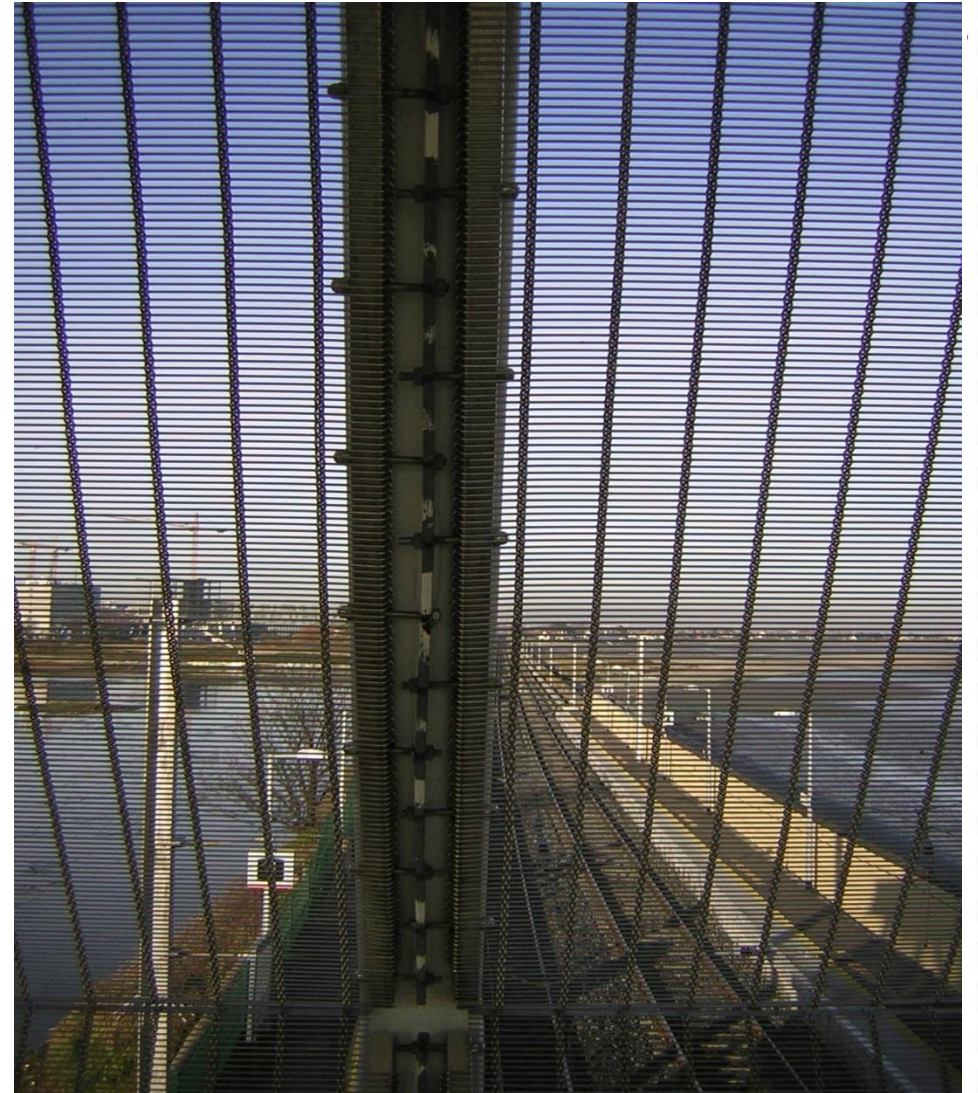
“It is always rewarding to see a vision become a reality by using our products in an innovative way. We are always delighted to work with you to ensure that our product can add an edge to your design project. We can work with your CAD drawings to help develop cost effective solutions to meet your design requirements.” Fred Graepel – M.D.

Graepels are committed to providing high quality products, offering industry standard and bespoke products. Graepels continue to research new ideas and look to provide new solutions for your projects.

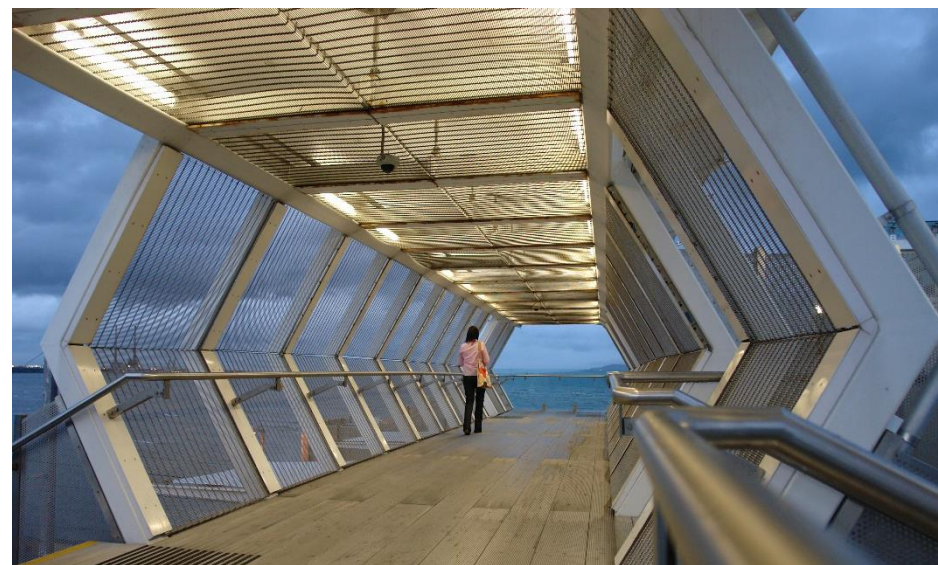
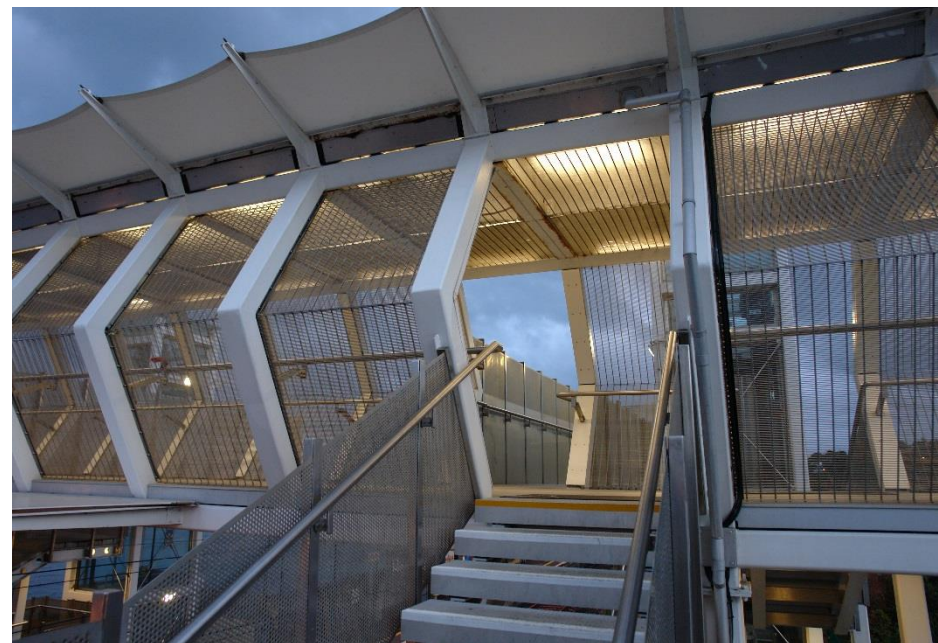


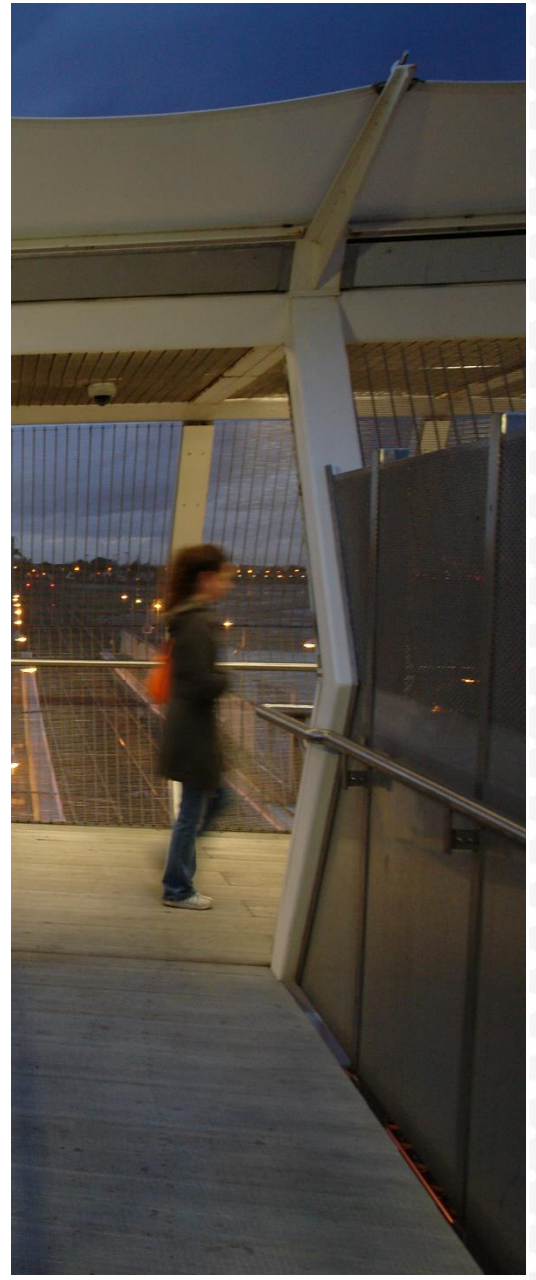
Boosterstown Train Station

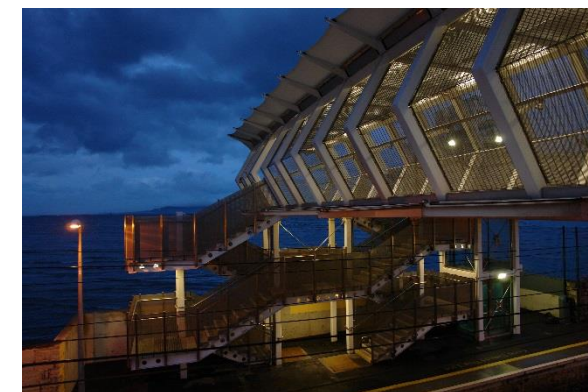
Perforated Metal balustrade infill and Straight Wire Mesh

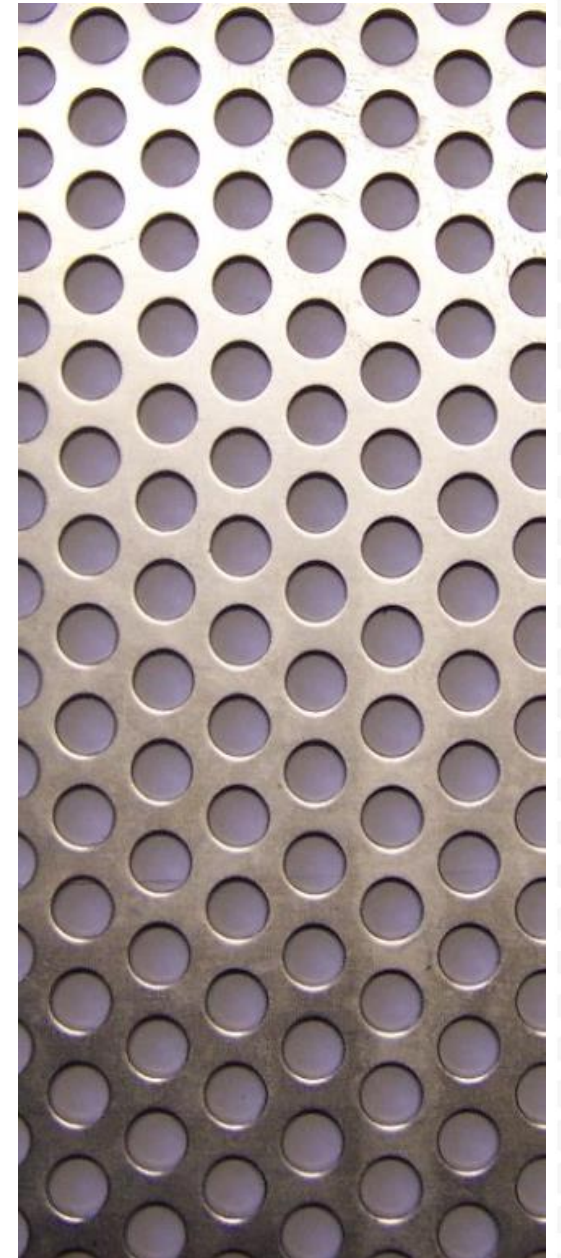








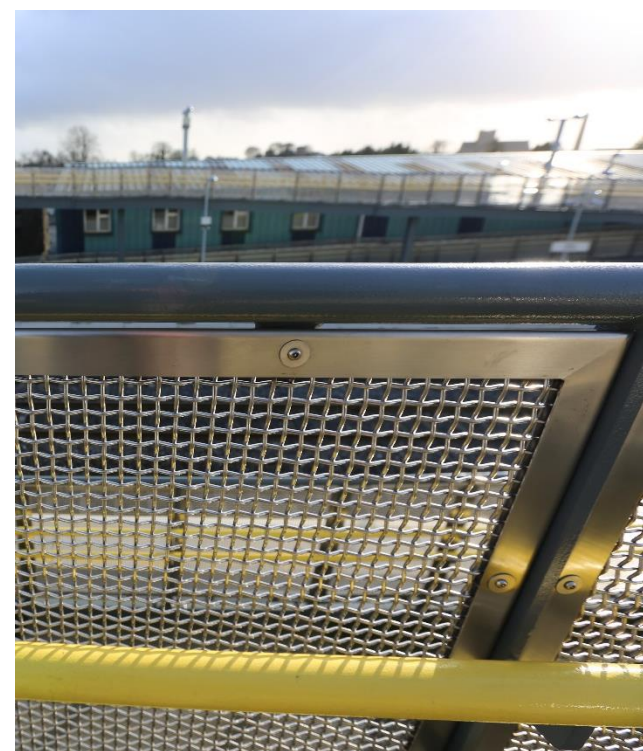


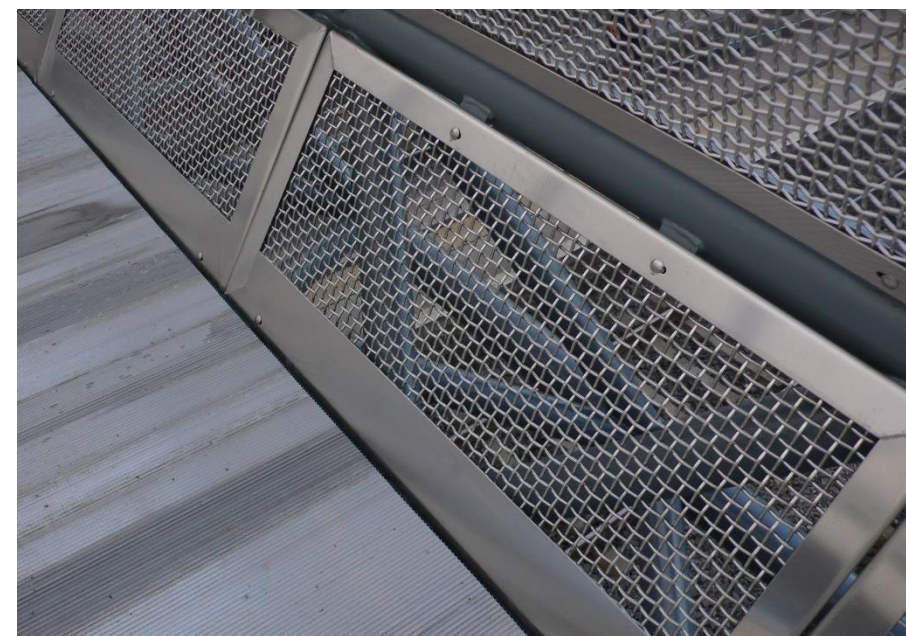
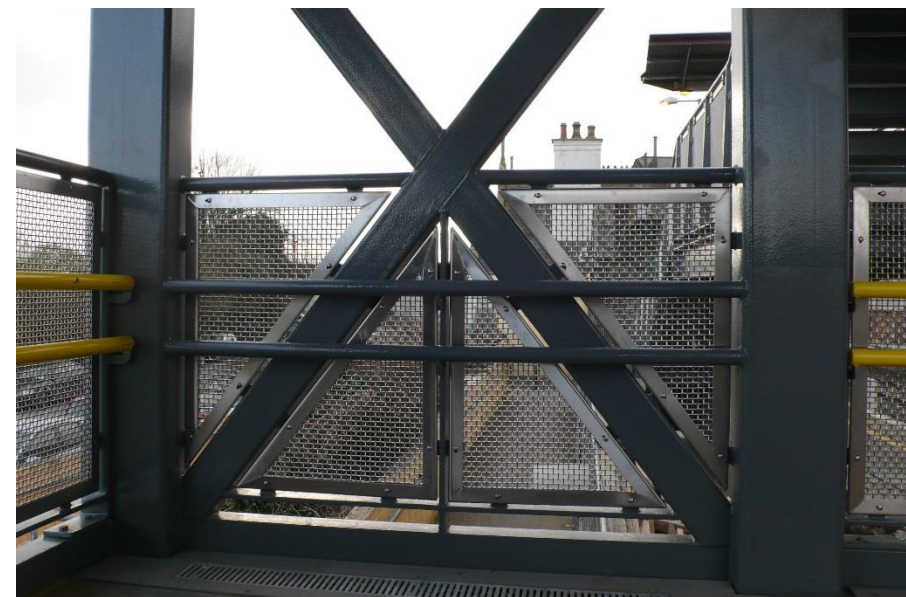


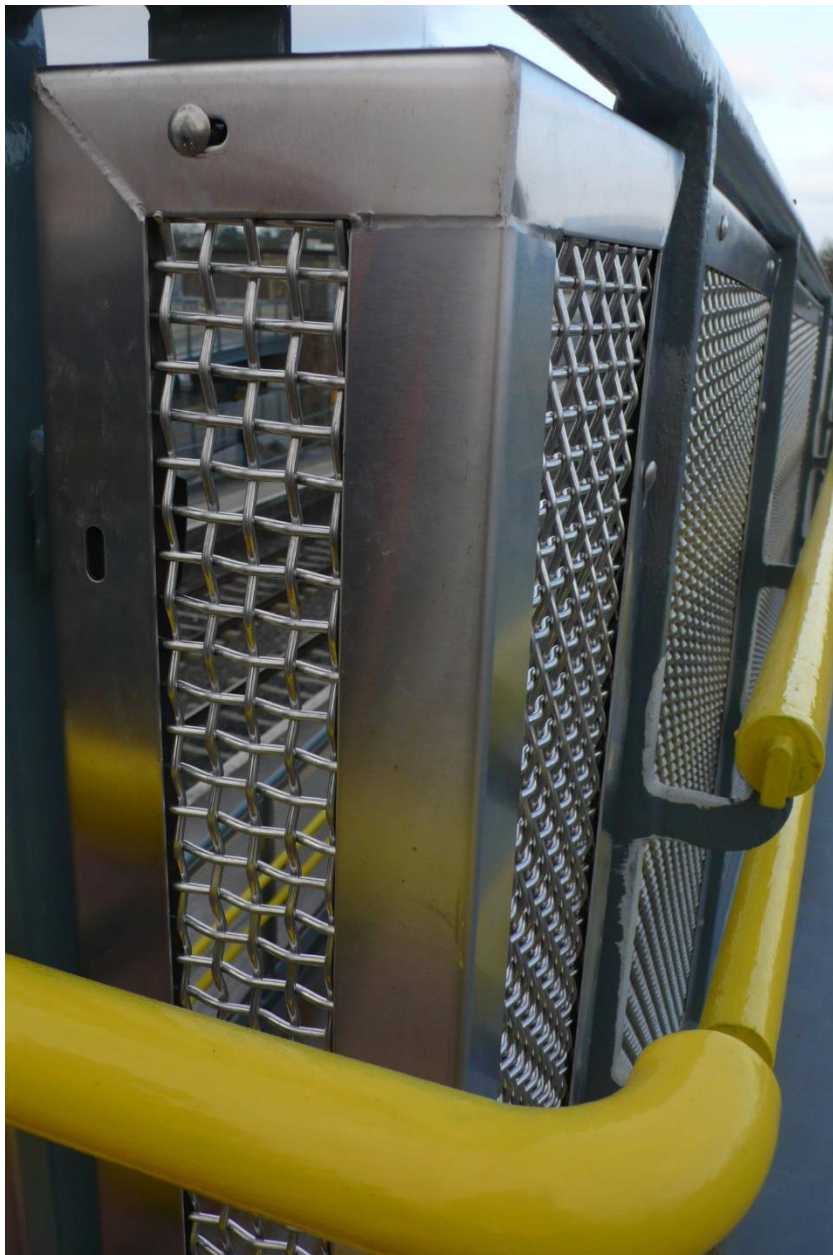
Kildare Train Station

Woven wire mesh walkway and balustrade infill. High open area increases visibility at night to prevent loitering and deter graffiti. Woven wire mesh was used throughout the entire station







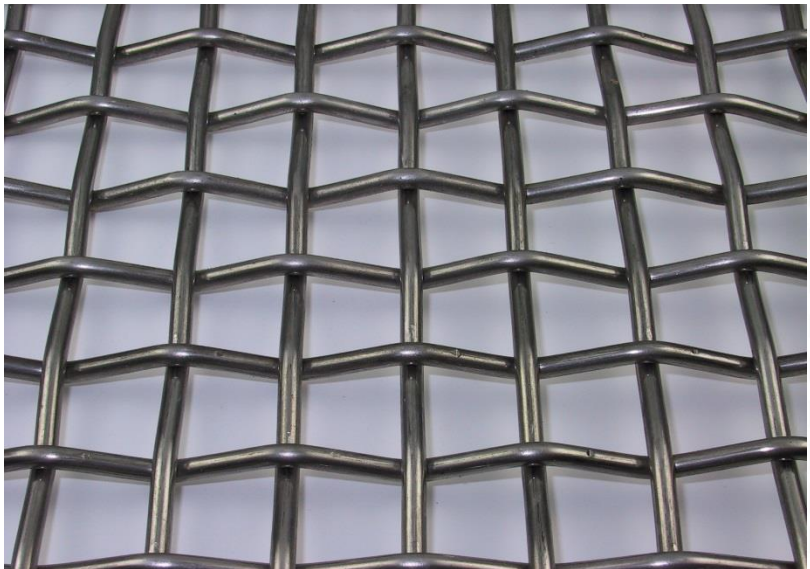
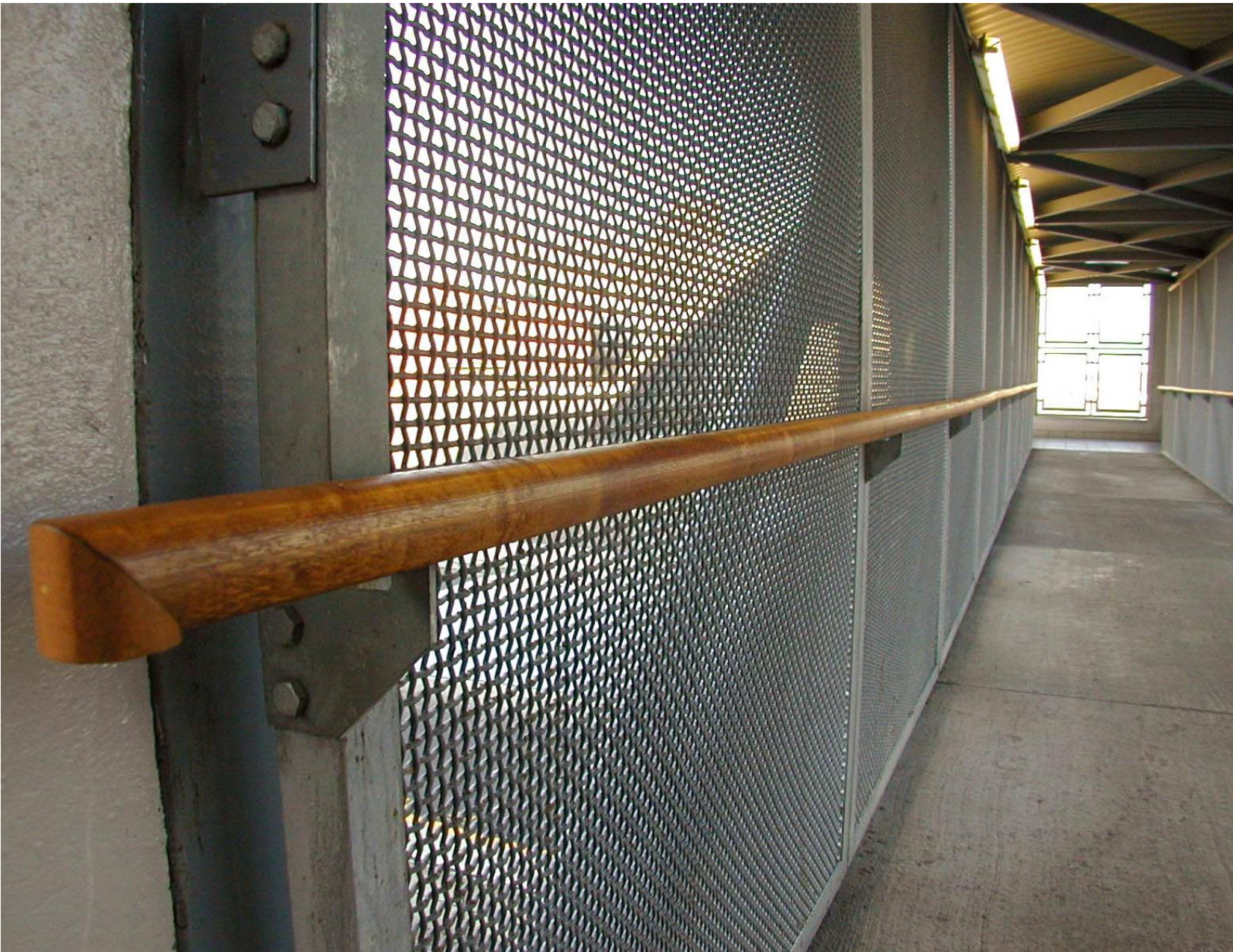


Barrow St Station, Dublin

Woven wire mesh balustrade infill in Barrow St. train station, Dublin. High open area and visibility through woven wire mesh allows for higher safety in stations at night and deters vandalism.







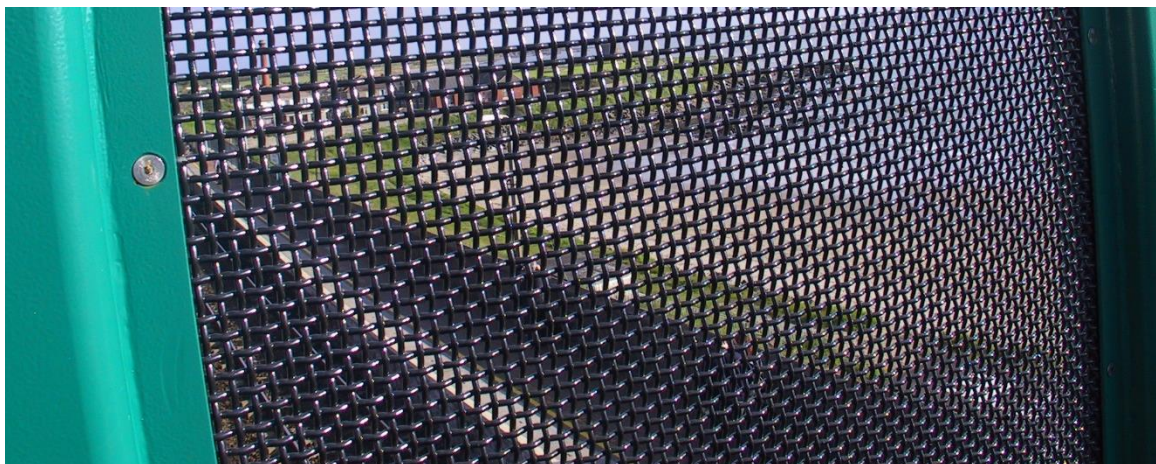
Irish Rail, Balbriggan

Lift shaft, woven wire mesh cladding, woven bridge infill, 12mm mesh in 5mm dia and hot dip galvanised with painted wire frame



IRISH RAIL – SKERRIES AND BALBRIGGAN

Woven wire mesh acts as weather screens for wind and Rain





Ashtown Train Station, Dublin

Perforated Metal cladding for railway line in Ashtown, Dublin train station. 4mm perforations with 5mm pitch, with 1mm bridges between perforations, giving a high open area and increasing visibility through the perforations to see oncoming trains. Perforations also act as wind breakers in the waiting shelters

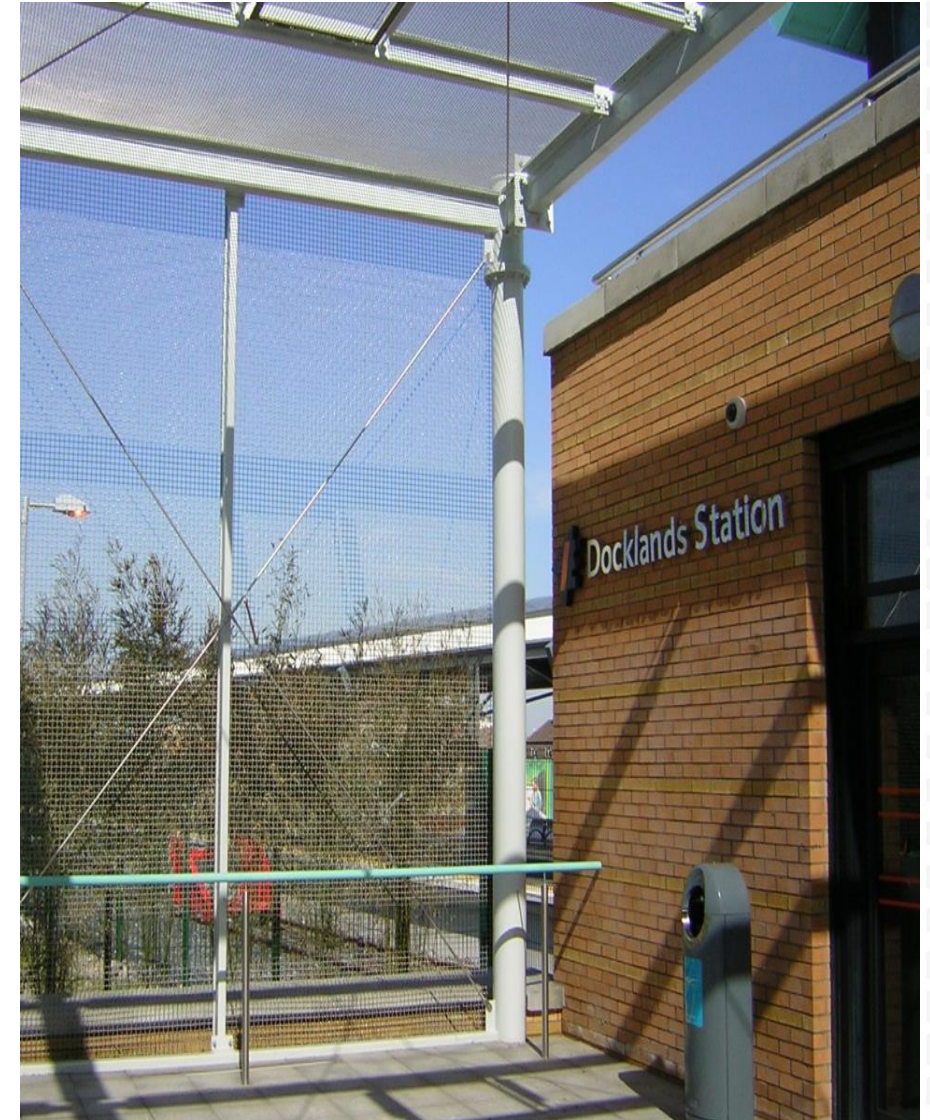




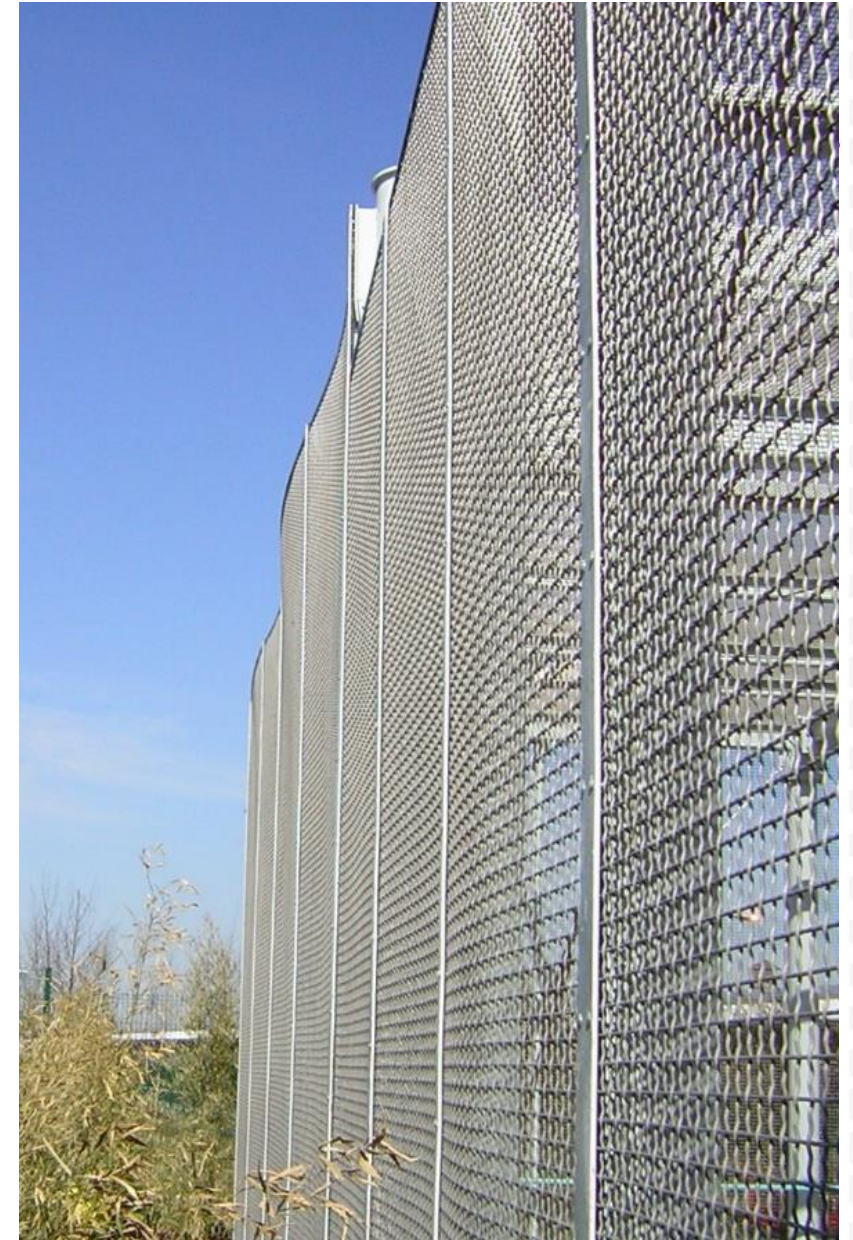


Dublin Docklands Train Station

Woven Wire Mesh 12mm mesh in 4mm 316 quality stainless steel wire, security panels upon entrance to train station



Woven Wire Mesh 12mm mesh in 4mm 316 quality stainless steel wire, security panels upon entrance to train station

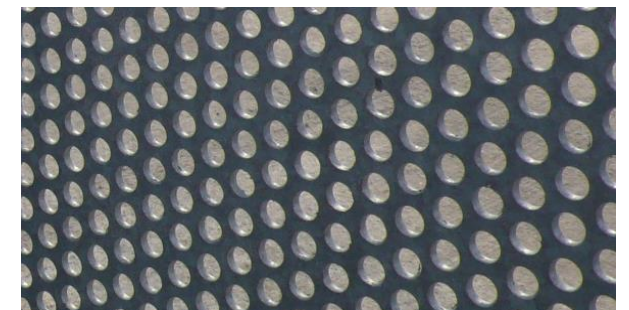
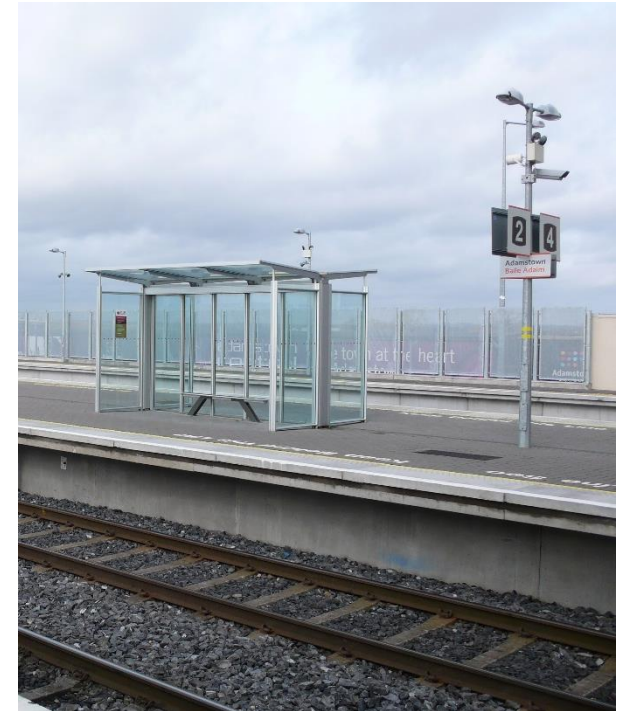


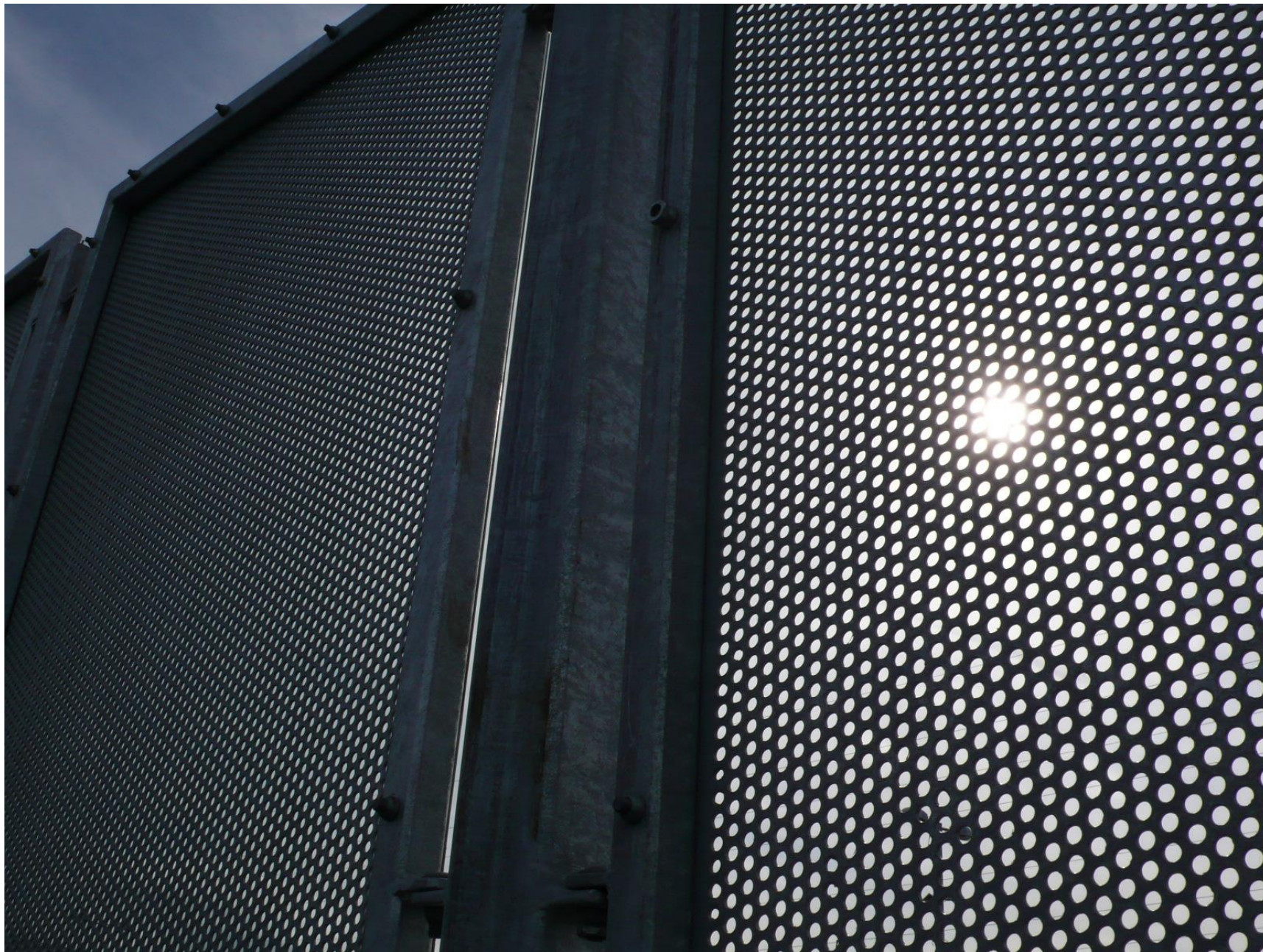
Woven Wire Mesh 12mm mesh in 4mm 316 quality stainless steel wire, security panels upon entrance to train station



Adamstown Train Station, Dublin

Perforated Metal Security fencing for train station. Adamstown train station uses 13mm perforations, with a 19mm pitch 60 degree staggered pitch and hot dip galvanised finish





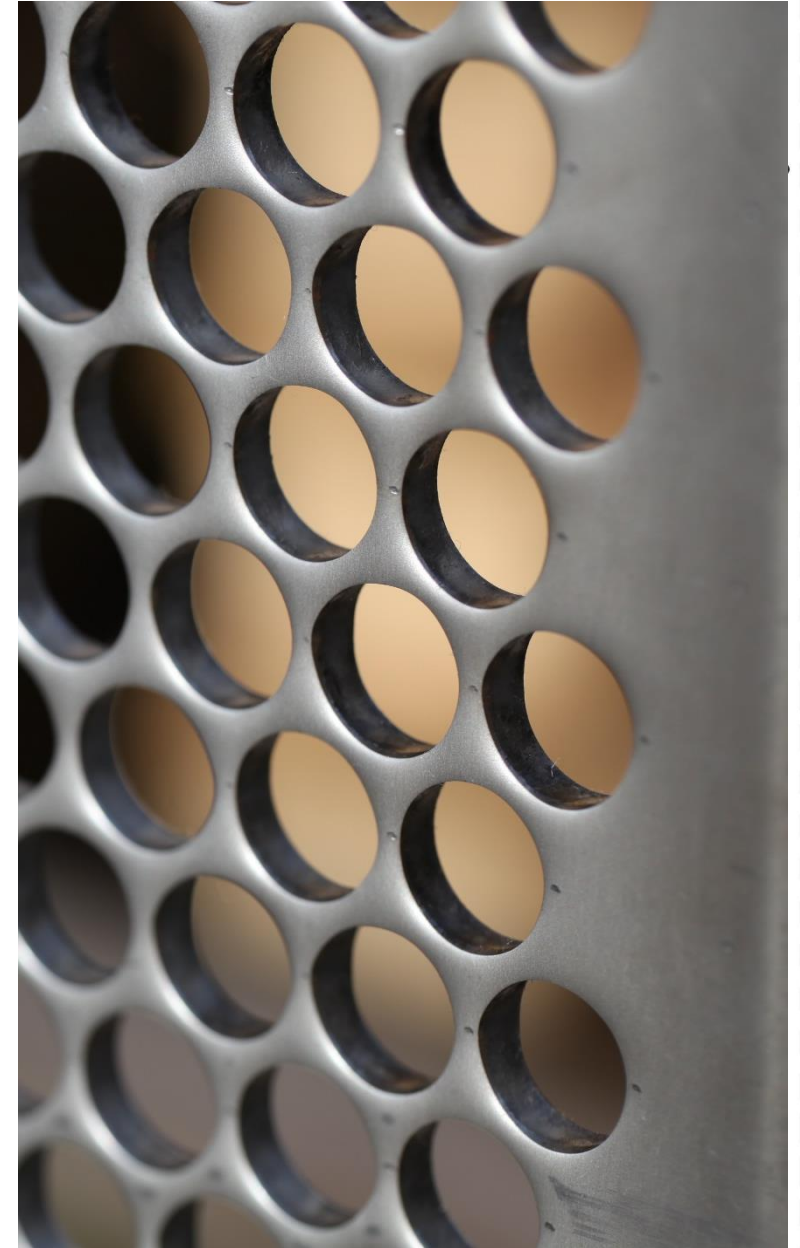


Killbarrack Dart Station

Powder coated Perforated Bridge cladding in 5mm aluminium using 20mm round perforations with a 25mm and 60 degree staggered pitch, used to prevent people throwing objects on railway lines. High open areas gives clear visibility.



Perforated Bridge cladding in 5mm aluminium using 20mm round perforations with a 25mm and 60 degree staggered pitch, used to prevent people throwing objects on railway lines



Castleknock Train Station

3mm round perforations with 4mm 60 degree staggered pitch pre galvanised panels with powder coated finish







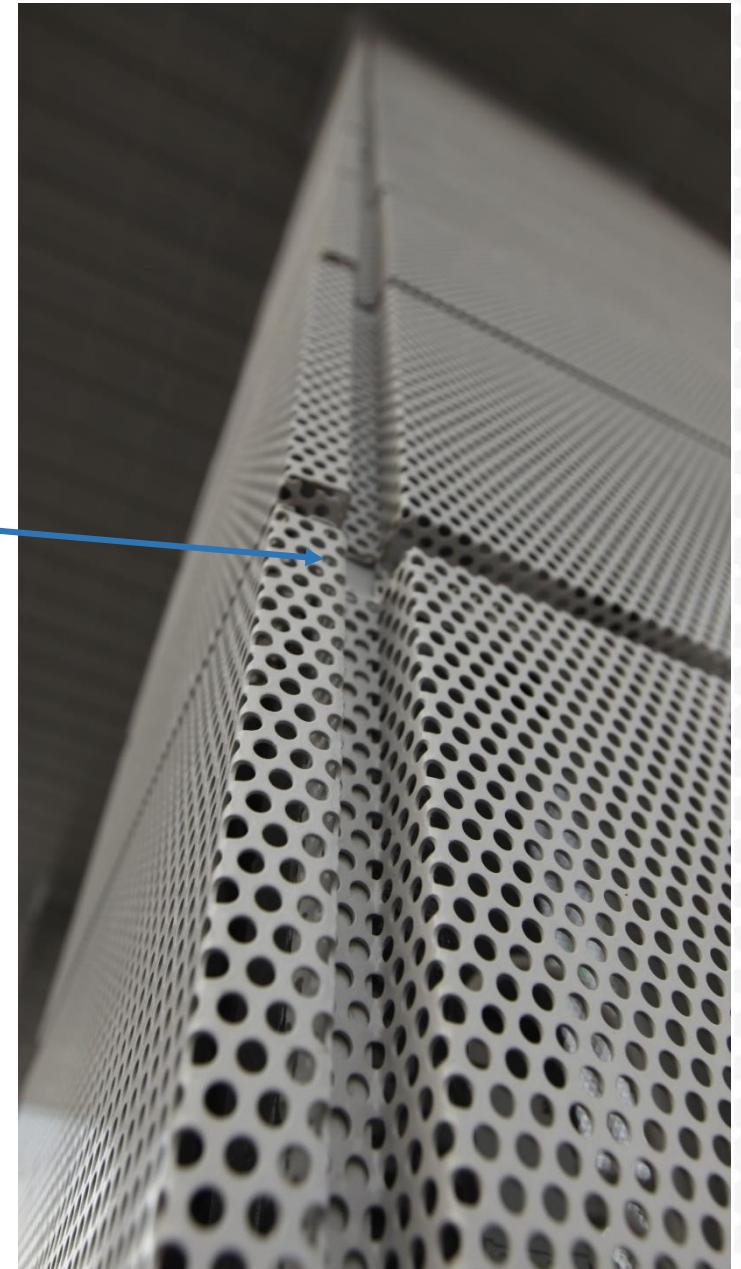
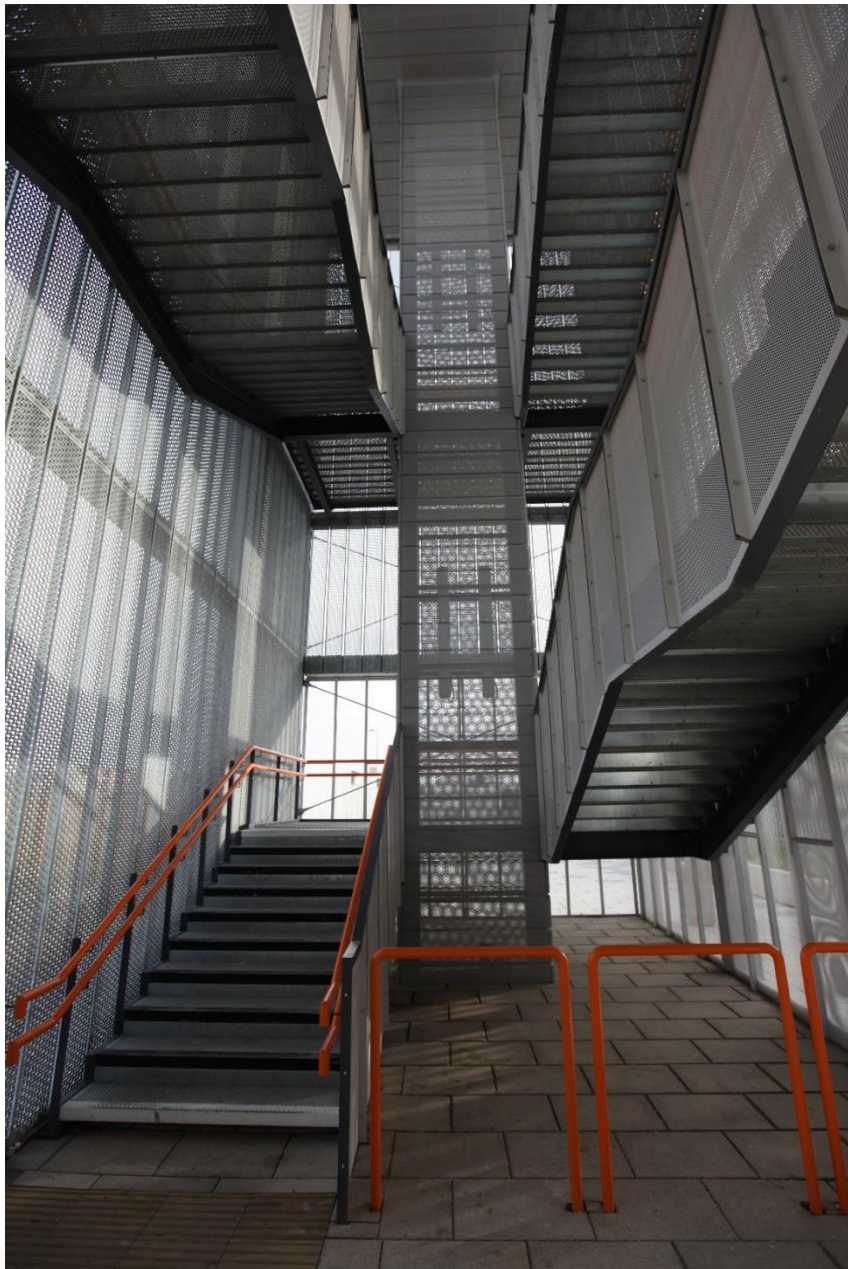
Clongriffin Train Station

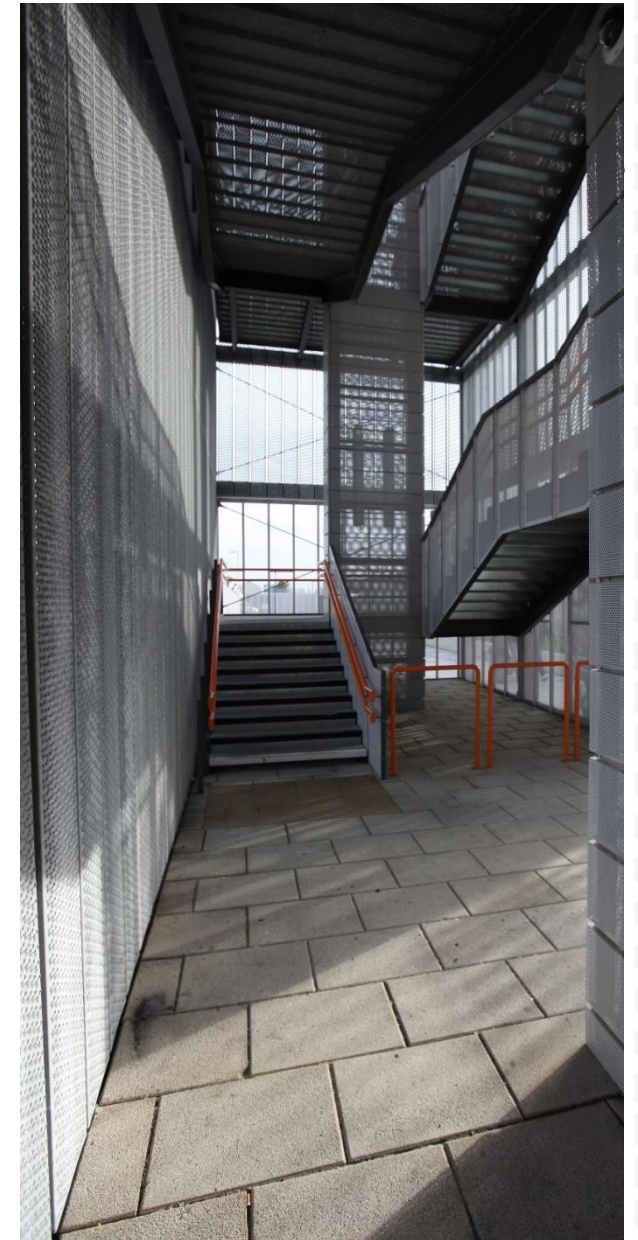


Clongriffin Train station is entirely perforated metal consisting of perforated curtain walls, lift shaft and stair acting as a weather screen against wind and rain. The perforations allow for full visibility discouraging loitering and vandalism

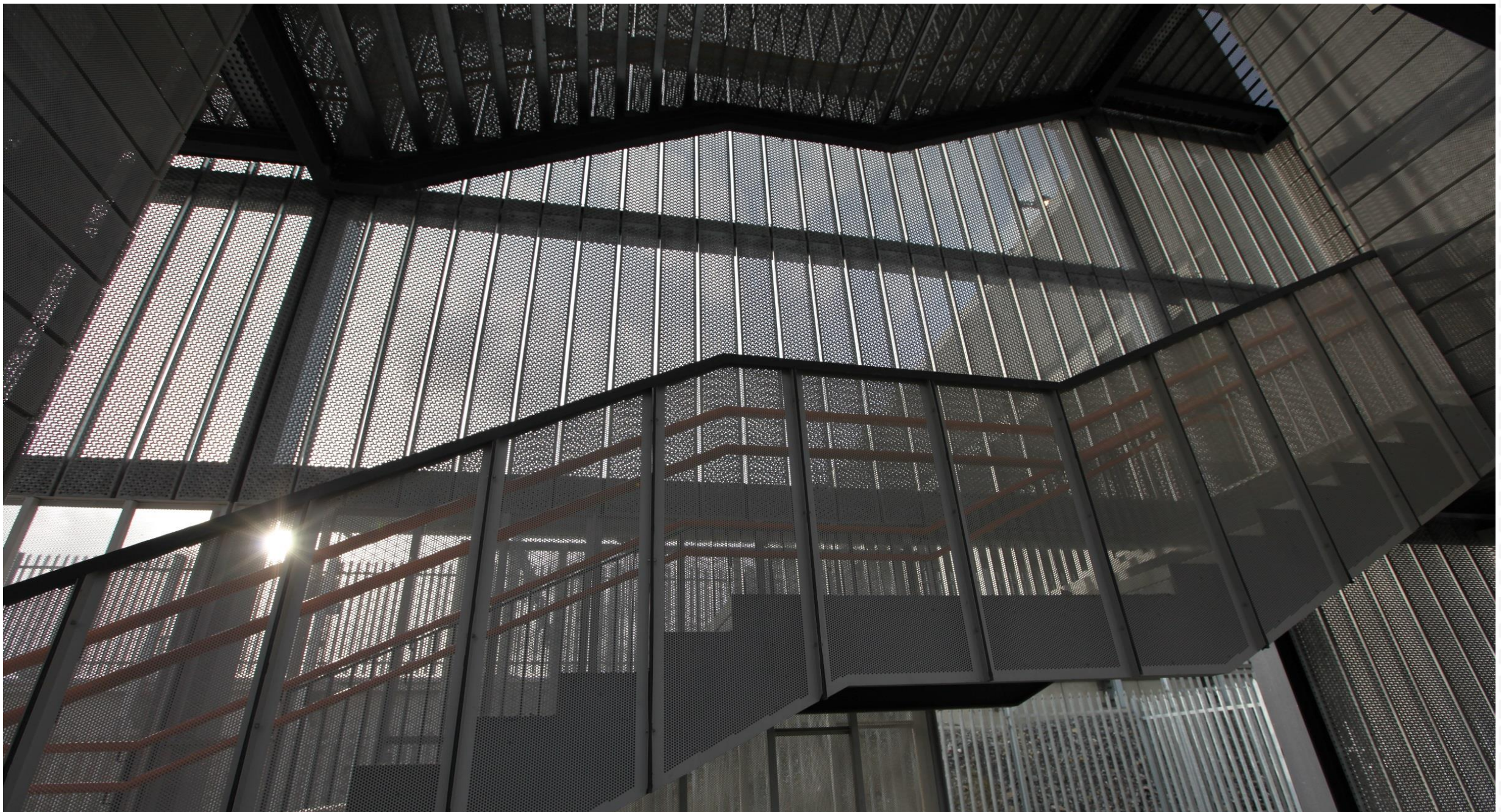












Athenry Station

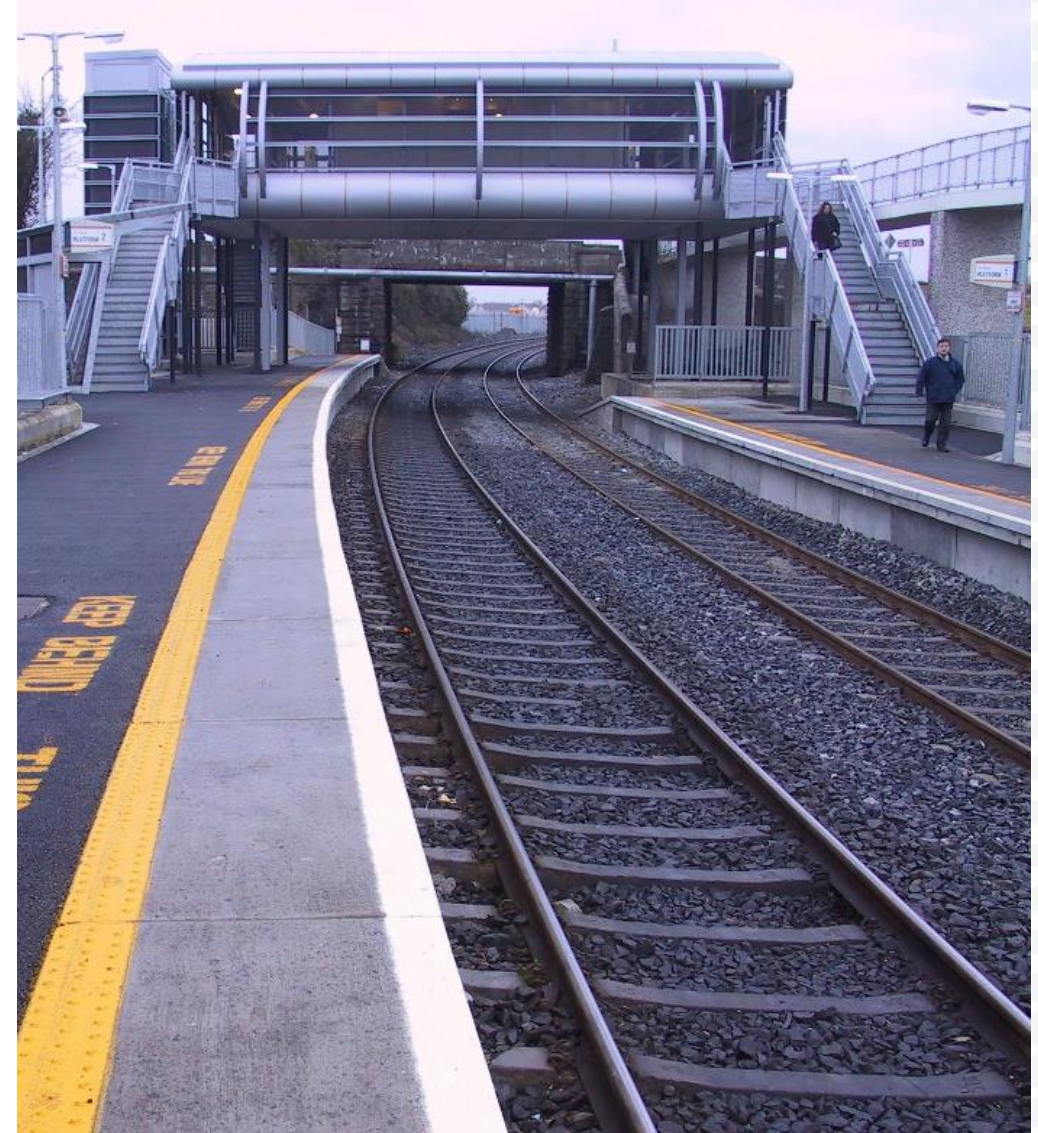


Athenry Station

High tensile vandal proof mesh – Normal tensile strength 28-20 tonne, Graepels woven wire mesh is from 80- 85 tonnes



Leixlip Railway Station





Industry Sectors



ARCHITECTURE

Graepels works closely with Architects and Designers from the beginning of any Project



CONSTRUCTION & INDUSTRIAL

We have over 50 years experience working in the construction and industrial sectors



SAFETY & SECURITY

The demand for Health, Safety and Security within various sectors is ongoing.

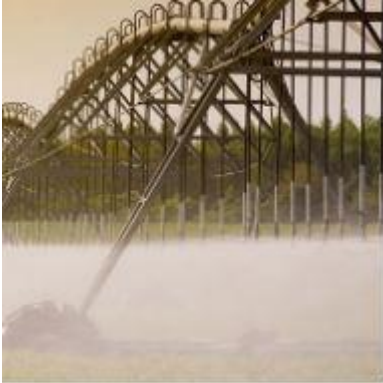


PUBLIC ART & SCULPTURE

From the beginning of any project we work very closely with Designers and Artists to ensure the best design outcome

Additional Industry Sectors

Your Choice for Perforated Metal & Woven Mesh
Bespoke metal products since 1959



AGRICULTURAL

We offer a full range of Perforated and Woven Wire Mesh materials which are widely used within the agricultural industry.



QUARRYING & MINING

Graepels has been manufacturing and supply products to the Quarry and Mining industries for over 50 years.



LANDSCAPING & GARDEN DESIGN

Graepels products are constantly being applied in wide range of Garden designs and landscaping



WASTE MANAGEMENT & RECYCLING

Graepels manufacture a range of products for the waste management and recycling industry



Thank You for Trainspotting!