

Picture Perf

Sales@graepels.com

UK +44 1925 229809

IRE +353 21 477 2105

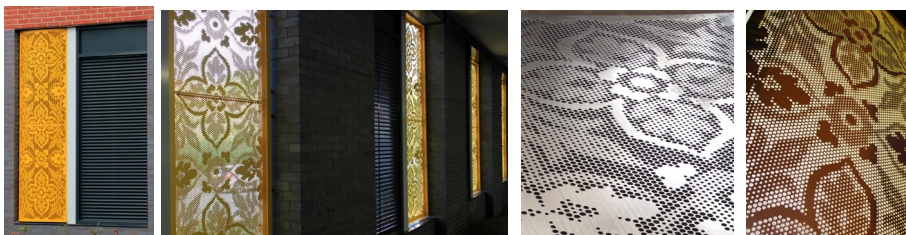
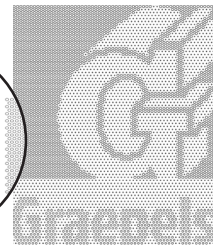
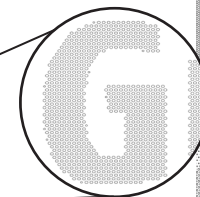
What is Picture Perf?

Picture Perf is an image/graphic which is translated onto sheet metal by punching holes into sheet metal. Picture perf is available in a range of materials, including but not limited to: Mild steel, aluminium, stainless steel, brass etc.

A variety of perforation sizes and shapes can be used to create shading, depth and detail. Picture Perf can be processed using **standard round perforations** or alternatively square, hexagonal or bespoke shapes can be used, depending on our customers requirements.

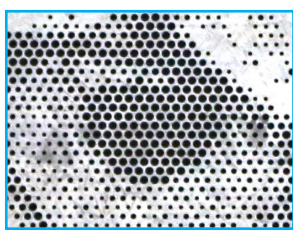


Graepels



Picture Perf The Process?

Picture Perf starts with an image (provided by the customer) and then processed by our designers.



Five Storey Office Foyer (Leeds, UK) Picture Perf Atrium Lift wall, features 61,000 sq ft. of backlit historic perforated metal panels with images of the city and region connecting a global business to its immediate context.

